

# Mineral Industry Surveys

## For information, contact:

Daniel M. Flanagan, Copper Commodity Specialist  
National Minerals Information Center  
Telephone: (703) 648-7726  
Email: dflanagan@usgs.gov

Sheema Merchant (Data)

Telephone: (703) 659-9944

Email: smerchant@usgs.gov

**Internet:** <https://www.usgs.gov/centers/national-minerals-information-center/mineral-industry-surveys>

## COPPER IN APRIL 2024

In April 2024, U.S. mines produced 87,300 metric tons (t) of recoverable copper. The average daily mine production was 2,910 t compared with 2,880 t in March and was 3% less than that in April 2023 (fig. 1). Year-to-date mine output of recoverable copper through April 2024 was 358,000 t compared with 360,000 t in the same time period in 2023 (table 2).

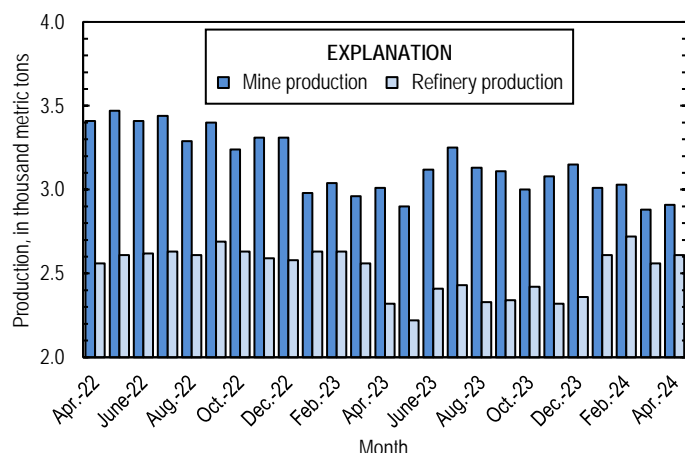


Figure 1. Average daily copper mine (recoverable) and refinery (primary and secondary) production in the United States from April 2022 through April 2024.

To avoid disclosing company proprietary data, smelter and electrolytic refinery production in April 2024 were estimated based on public information and do not reflect output reported to the U.S. Geological Survey. Estimated production of anodes at primary and secondary copper smelters in the United States was 40,000 t in April 2024. Year-to-date estimated smelter production was 160,000 t, an increase of 8% from that in the same time period in 2023 (table 3).

Domestic refineries produced 78,400 t of copper in April 2024; data for electrolytic and electrowon output, as well as refined production from scrap, are reported in table 4. The average daily refinery production of copper was 2,610 t, slightly greater than that in March and an increase of 13% compared with that in April 2023 (fig. 1). Year-to-date refinery output through April 2024 was 318,000 t, 4% greater than that in the same time period in 2023.

## Prices

In April 2024, the average Commodity Exchange Inc. (COMEX) copper price was \$4.36 per pound, an increase of 10% from \$3.98 per pound in March and 9% higher than \$4.00 per pound in April 2023 (fig. 2, table 11). The average U.S. dealers buying price of number 2 copper scrap was \$3.15 per pound in April 2024, an increase of 5% from \$3.01 per pound in March, and was \$3.66 per pound in April 2023 (fig. 2, table 12).

Effective April 13, the Governments of the United States and the United Kingdom prohibited metal exchanges from accepting new deliveries of copper produced in Russia. Refined copper prices increased following the announcements owing to expectations that global copper supply would temporarily decrease (Asenov, 2024; Garcia, 2024). An improved outlook for global copper demand, driven by increased manufacturing activity in the United States and China, and the potential for mine disruptions in several countries also contributed to higher copper prices in April compared with those in March (Wang, 2024).

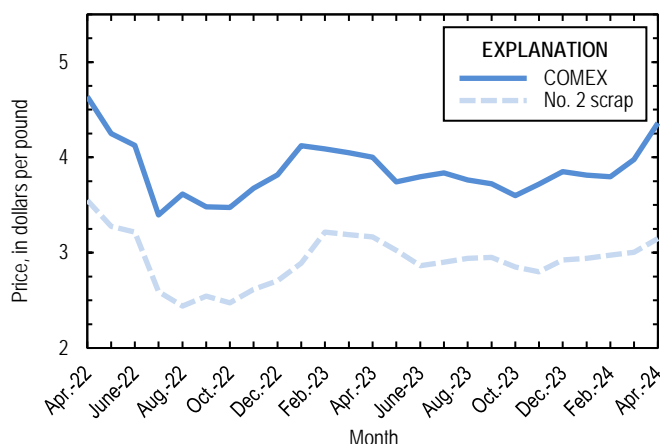


Figure 2. Monthly average Commodity Exchange Inc. (COMEX) copper price and no. 2 copper scrap U.S. dealers buying price from April 2022 through April 2024. Sources: Fastmarkets-AMM and S&P Global Platts Metals Week.

## Stocks

Refined copper stocks in the United States totaled 65,400 t at the end of April 2024, a decrease of 26% compared with those at the end of March and 12% less than those at the end of April 2023. Stocks at producers and fabricators (brass mills, refineries, wire-rod mills, and other manufacturers) and stocks at exchanges (COMEX and London Metal Exchange Ltd.) decreased by 1,520 t (5%) and 21,200 t (37%), respectively, from those at the end of March (fig. 3, table 10).

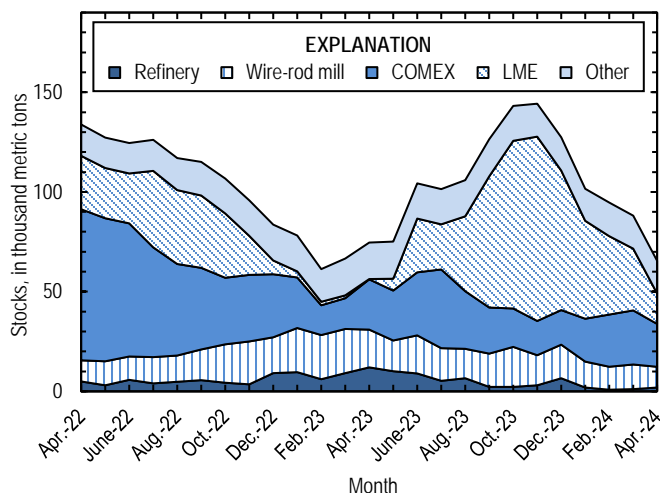


Figure 3. Domestic refined copper stocks at end of month, by type, from April 2022 through April 2024. Sources: London Metal Exchange Ltd., S&P Global Platts Metals Week, and U.S. Geological Survey.

## Industry News and Updates

**Chile.**—Corporación Nacional del Cobre de Chile (Codelco) announced the commissioning of a new copper production line at the Andina Mine on April 5, concluding a series of projects to transition the mine from underground to open pit operations. The venture was projected to extend the mine life by at least 30 years, during which Codelco expected to extract approximately 8.8 million metric tons (Mt) of copper. In 2023, Andina produced 165,000 t of copper in concentrates (Corporación Nacional del Cobre de Chile, 2024a; 2024b, p. 15).

**Congo (Kinshasa).**—In a letter dated April 12, the Government of Congo (Kinshasa) ordered the suspension of all activities at Zijin Mining Group Co. Ltd.’s COMMUS copper-cobalt mine, pending an investigation, after high levels of radiation were detected in a cobalt shipment. The COMMUS Mine, also known as the Kolwezi Mine, produced 127,000 t of copper in 2023 (Kasongo, 2024; Reuters, 2024; Zijin Mining Group Co. Ltd., 2024, p. 37).

**India.**—On March 28, Kutch Copper Ltd. (a subsidiary of Adani Enterprises Ltd.) shipped the first cathodes produced at a new copper smelter and electrolytic refinery complex in Mundra. The design capacity of the first phase of the operation was 500,000 metric tons per year of refined copper, and the company planned a second phase that would expand the annual production capacity to 1 Mt. At full capacity, the stage one refinery would be the leading producer of refined copper in India, and the stage two facility would be the second-ranked copper refinery in the world (Adani Enterprises Ltd., 2024; International Copper Study Group, 2023, p. 40, 222, 267–268).

## References Cited

- Adani Enterprises Ltd., 2024, Adani’s copper unit in Mundra begins operations: Ahmedabad, India, Adani Enterprises Ltd. media release, March 28. (Accessed August 27, 2024, at <https://www.adanienterprises.com/en/newsroom/media-releases/adanis-copper-unit-in-mundra-begins-operations>.)
- Asenov, Grace, 2024, US, UK restrict exchange trading of new Russian aluminum, copper, nickel: Fastmarkets-AMM, April 12. (Accessed April 19, 2024, via <https://www.fastmarkets.com/>.)
- Corporación Nacional del Cobre de Chile, 2024a, Codelco finaliza Traspaso Andina y extiende la vida útil de uno de los yacimientos de cobre más grandes del mundo [Codelco completes Andina Transfer and extends the useful life of one of the largest copper deposits in the world]: Santiago, Chile, Corporación Nacional del Cobre de Chile press release, April 5. (Accessed August 27, 2024, at <https://www.codelco.com/sin-titulo-178487536>.) [In Spanish.]
- Corporación Nacional del Cobre de Chile, 2024b, Memoria anual 2023—Queremos ser el pilar del desarrollo sostenible de Chile y el mundo [Annual report 2023—We want to be the pillar of the sustainable development of Chile and the world]: Santiago, Chile, Corporación Nacional del Cobre de Chile, 180 p. (Accessed August 27, 2024, at [https://www.codelco.com/prontus\\_codelco/site/docs/20240404/20240404191040/memoria\\_codelco\\_2023.pdf](https://www.codelco.com/prontus_codelco/site/docs/20240404/20240404191040/memoria_codelco_2023.pdf).) [In Spanish.]
- Garcia, Angelica, 2024, Russia metal restrictions push aluminum, copper, nickel prices higher: S&P Capital IQ, April 22. (Accessed April 25, 2024, via <https://www.capitaliq.spglobal.com>.)
- International Copper Study Group, 2023, Directory of copper mines, smelters and refineries up to 2027: Lisbon, Portugal, International Copper Study Group, December 1, 335 p. (Accessed April 1, 2024, via <https://icsg.org/>.)
- Kasongo, A.A., 2024, Zijin’s Congo mine shipments returned due to radiation levels, ministry says: Reuters, April 24. (Accessed August 27, 2024, at <https://www.reuters.com/markets/commodities/zijins-congo-mine-shipments-returned-due-radiation-levels-ministry-says-2024-04-22/>.)
- Reuters, 2024, Zijin cooperating with Congo probe after radiation detected in cobalt load: Reuters, April 24. (Accessed August 27, 2024, at <https://www.reuters.com/markets/commodities/zijin-cooperating-with-congo-probe-after-cobalt-with-radiation-recalled-2024-04-23/>.)
- Wang, Ruilin, 2024, Copper CBS April 2024—Prices rally on tight supply, upbeat demand outlook: S&P Capital IQ, April 23, 5 p. (Accessed April 26, 2024, via <https://www.capitaliq.spglobal.com>.)
- Zijin Mining Group Co. Ltd., 2024, Annual report 2023: Longyan, China, Zijin Mining Group Co. Ltd., 448 p. (Accessed August 27, 2024, at <https://www.zijinmining.com/upload/file/2024/04/30/74fe00e4dbe140fab01574193d4aae65.pdf>.)

*A worksheet has been added to the Excel table files that includes a button to remove text and numerical footnotes from data cells. This will allow users to only have numbers in data cells. Please see the worksheet titled “RemoveTextButton” for instructions on how to use the tool. Note: You must download the Excel file to use the tool.*

*List services and web feed subscribers are the first to receive notification of USGS minerals information publications and data releases. For more information on how to subscribe, go to <https://www.usgs.gov/centers/national-minerals-information-center/minerals-information-publication-list-services>.*

**Table 1.** Salient statistics of the copper industry in the United States.

[Data are rounded to no more than three significant digits, except prices; may not add to totals shown. Data are in metric tons, copper content, unless otherwise specified. Estimated and revised data are marked with a superscript “e” and “r”.]

Copper statistic	Source table <sup>1</sup>	2023	2024			
			February	March	April	January–April
Primary production (from ore)						
Mine, recoverable <sup>2</sup>	( <sup>2</sup> )	1,120,000	87,900 <sup>r</sup>	89,400 <sup>r</sup>	87,300	358,000
Smelter <sup>3,4</sup>	( <sup>3</sup> )	378,000	40,000 <sup>e</sup>	40,000 <sup>e</sup>	40,000 <sup>e</sup>	160,000 <sup>e</sup>
Refinery, electrolytic <sup>4</sup>	( <sup>4</sup> )	327,000	37,000 <sup>e</sup>	37,000 <sup>e</sup>	37,000 <sup>e</sup>	148,000 <sup>e</sup>
Refinery, electrowon	( <sup>4</sup> )	515,000	38,600 <sup>r</sup>	39,200 <sup>r</sup>	38,200	157,000
<b>Total refinery</b>	( <sup>4</sup> )	842,000	75,600 <sup>r</sup>	76,200 <sup>r</sup>	75,200	305,000
Secondary production (from copper-base scrap) <sup>5</sup>						
Refineries <sup>6</sup>	( <sup>5</sup> )	38,900	3,220	3,220	3,230	12,900
Ingot makers <sup>e, 7</sup>	( <sup>5</sup> )	37,400	3,120	3,120	3,120	12,500
Brass and wire-rod mills	( <sup>5</sup> )	668,000	55,900	54,200	58,100	225,000
Foundries, etc. <sup>e, 7</sup>	( <sup>5</sup> )	35,200	2,930	2,930	2,930	11,700
Consumption						
Reported, refined copper	( <sup>7</sup> )	1,570,000	134,000	127,000	130,000	530,000
Apparent, primary refined copper and copper from old scrap <sup>8</sup>	( <sup>8</sup> )	1,680,000	130,000 <sup>r</sup>	140,000 <sup>r</sup>	148,000	621,000
Reported, purchased copper-base scrap (gross weight)	( <sup>9</sup> )	898,000	75,000	73,300	75,300	299,000
Stocks at end of period						
Blister and anodes	( <sup>10</sup> )	10,500	12,800	15,200	18,100	18,100
Refined <sup>9</sup>	( <sup>10</sup> )	127,000	94,600	88,100	65,400	65,400
Prices (cents per pound) <sup>10</sup>						
Commodity Exchange Inc. (COMEX)	( <sup>11</sup> )	385.749	379.663	397.643	436.091	398.651
U.S. producers cathode <sup>11</sup>	( <sup>11</sup> )	395.297	388.038	406.143	444.991	407.070
Imports for consumption <sup>12</sup>						
Ore and concentrates	( <sup>13</sup> )	3,300	8	( <sup>13</sup> )	0	8
Refined	( <sup>13</sup> )	771,000	39,700	50,100	43,800	224,000
Exports <sup>12</sup>						
Ore and concentrates	( <sup>14</sup> )	341,000	27,900	24,100	27,800	104,000
Refined	( <sup>14</sup> )	34,400	4,870	4,780	5,880	20,100

<sup>1</sup>Numbers in parentheses refer to the tables where these data are located.

<sup>2</sup>Includes the recoverable copper content of concentrates (of copper and other metals), copper produced by solvent extraction and electrowinning, and copper recovered as precipitates.

<sup>3</sup>Primary and secondary production.

<sup>4</sup>To avoid disclosing company proprietary data, monthly smelter and electrolytic production in 2024 are estimated based on public information and do not reflect output reported to the U.S. Geological Survey.

<sup>5</sup>Copper recovered from copper-base scrap and converted to refined metal, alloys, and other forms. Does not include copper recovered from scrap types other than copper-base.

<sup>6</sup>Electrolytically refined and fire-refined copper.

<sup>7</sup>Plants are surveyed by the U.S. Geological Survey on an annual basis; data after 2022 not yet available. Data are estimated based on the monthly average of 2022 annual data.

<sup>8</sup>Primary refined copper production plus copper recovered from old scrap plus refined imports for consumption minus refined exports minus refined stock change during period. Old scrap consists of copper items used by consumers.

<sup>9</sup>Stocks of refined copper at brass mills, exchanges, refineries, wire-rod mills, and other manufacturers.

<sup>10</sup>Source: S&P Global Platts Metals Week.

<sup>11</sup>Sum of the monthly average COMEX price and monthly average New York dealers cathode premium; reflects the delivered spot price of copper cathode to U.S. consumers by U.S. producers.

<sup>12</sup>Source: U.S. Census Bureau. See tables 13 and 14 for the relevant Harmonized Tariff Schedule of the United States (imports) and Schedule B of the United States (exports) codes.

<sup>13</sup>Less than ½ unit.

**Table 2.** Mine production of copper in the United States.

[Data are rounded to no more than three significant digits; may not add to totals shown. Data are in metric tons.

Revised data are marked with a superscript “r”.]

Period	Recoverable copper <sup>1</sup>			Contained copper		
	Arizona	Others <sup>2</sup>	Total	Electrowon	Concentrates <sup>3</sup>	Total
<b>2023</b>						
January–April	265,000	95,200	360,000	170,000	198,000	368,000
April	67,300	23,000	90,300	43,400	48,800	92,300
May	65,000	24,800	89,900	42,500	49,300	91,800
June	70,000	23,600	93,600	46,000	49,600	95,500
July	68,800	32,000	101,000	47,800	55,000	103,000
August	67,000	30,100	97,100	44,600	54,500	99,100
September	64,600	28,600	93,200	42,500	52,600	95,100
October	64,200	28,900	93,100	43,000	52,100	95,000
November	64,200	28,200	92,400	37,500	57,000	94,500
December	66,900	30,800	97,700	41,100	58,300	99,500
January–December	795,000	322,000	1,120,000	515,000	626,000	1,140,000
<b>2024</b>						
January	65,500 <sup>r</sup>	28,000 <sup>r</sup>	93,400 <sup>r</sup>	40,700 <sup>r</sup>	54,800 <sup>r</sup>	95,500 <sup>r</sup>
February	60,500 <sup>r</sup>	27,500 <sup>r</sup>	87,900 <sup>r</sup>	38,600 <sup>r</sup>	51,200 <sup>r</sup>	89,900 <sup>r</sup>
March	61,300 <sup>r</sup>	28,100 <sup>r</sup>	89,400 <sup>r</sup>	39,200 <sup>r</sup>	52,100 <sup>r</sup>	91,300 <sup>r</sup>
April	60,900	26,400	87,300	38,200	51,000	89,200
<b>January–April</b>	<b>248,000</b>	<b>110,000</b>	<b>358,000</b>	<b>157,000</b>	<b>209,000</b>	<b>366,000</b>

<sup>1</sup>Includes the recoverable copper content of concentrates (of copper and other metals), copper produced by solvent extraction and electrowinning, and copper recovered as precipitates.<sup>2</sup>Includes production from Michigan, Missouri, Montana, Nevada, New Mexico, and Utah.<sup>3</sup>Also includes copper recovered as precipitates.

**Table 3.** Copper produced at smelters in the United States.

[Data are rounded to no more than three significant digits; may not add to totals shown. Data are in metric tons, copper content. Estimated data are marked with a superscript “e”.]

<b>Period</b>	<b>Anode production<sup>1</sup></b>
<b>2023<sup>2</sup></b>	
January–April	148,000
April	28,000
May	28,000
June	28,000
July	22,000
August	22,000
September	22,000
October	36,000
November	36,000
December	36,000
January–December	378,000
<b>2024<sup>e,3</sup></b>	
January	40,000
February	40,000
March	40,000
April	40,000
<b>January–April</b>	<b>160,000</b>

<sup>1</sup>Primary and secondary production.

<sup>2</sup>Data in 2023 consist of primary production from company reports and an estimated 3,000 metric tons per month of secondary anodes.

<sup>3</sup>To avoid disclosing company proprietary data, monthly anode production in 2024 is estimated based on public information and does not reflect output reported to the U.S. Geological Survey. Data consist of primary production estimated from information in company reports and an estimated 3,000 metric tons per month of secondary anodes.

**Table 4.** U.S. production of refined copper.

[Data are rounded to no more than three significant digits; may not add to totals shown. Data are in metric tons.

Estimated and revised data are marked with a superscript “e” and “r”.]

Period	From primary materials			From scrap <sup>2</sup>	Total refined
	Electrolytic <sup>1</sup>	Electrowon	Total primary		
2023					
January–April	121,000	170,000	291,000	12,900	304,000
April	23,000	43,400	66,400	3,220	69,600
May	23,000	42,500	65,500	3,260	68,700
June	23,000	46,000	69,000	3,230	72,200
July	24,400	47,800	72,200	3,270	75,500
August	24,400	44,600	69,000	3,220	72,200
September	24,400	42,500	66,900	3,300	70,200
October	28,900	43,000	71,900	3,250	75,100
November	28,900	37,500	66,400	3,220	69,600
December	28,900	41,100	70,000	3,240	73,300
January–December	327,000	515,000	842,000	38,900	881,000
2024					
January	37,000 <sup>e</sup>	40,700 <sup>r</sup>	77,700 <sup>r</sup>	3,220	80,900 <sup>r</sup>
February	37,000 <sup>e</sup>	38,600 <sup>r</sup>	75,600 <sup>r</sup>	3,220	78,800 <sup>r</sup>
March	37,000 <sup>e</sup>	39,200 <sup>r</sup>	76,200 <sup>r</sup>	3,220	79,400 <sup>r</sup>
April	37,000 <sup>e</sup>	38,200	75,200	3,230	78,400
January–April	148,000 <sup>e</sup>	157,000	305,000	12,900	318,000

<sup>1</sup>Data in 2023 are from company reports. To avoid disclosing company proprietary data, monthly electrolytic production in 2024 is estimated based on information in company reports and does not reflect output reported to the U.S. Geological Survey.

<sup>2</sup>Electrolytically refined and fire-refined copper.

**Table 5.** Copper recovered as refined copper and in alloys and other forms from purchased copper-base scrap in the United States.

[Data are rounded to no more than three significant digits; may not add to totals shown. Data are in metric tons. Estimated data are marked with a superscript “e”. New scrap refers to material generated during the manufacturing process. Old scrap consists of copper items used by consumers.]

superscript <sup>e</sup> : New scrap refers to material generated during the manufacturing process. Old scrap consists of copper items used by consumers.]

Period	Refineries <sup>1</sup>		Ingot makers <sup>e, 2</sup>		Brass and wire-rod mills		Foundries, etc. <sup>e, 2</sup>		Total <sup>3</sup>
	New scrap <sup>e</sup>	Old scrap	New scrap	Old scrap	New scrap	Old scrap	New scrap	Old scrap	
2023									
January–April	6,710	6,180	1,400	11,100	213,000	14,600	2,960	8,770	265,000
April	1,680	1,540	350	2,770	52,500	3,300	740	2,190	65,100
May	1,680	1,580	350	2,770	51,900	2,960	740	2,190	64,200
June	1,680	1,550	350	2,770	49,900	2,950	740	2,190	62,200
July	1,680	1,590	350	2,770	52,600	3,260	740	2,190	65,100
August	1,680	1,540	350	2,770	53,500	3,280	740	2,190	66,000
September	1,680	1,620	350	2,770	51,800	2,960	740	2,190	64,100
October	1,680	1,570	350	2,770	51,700	3,220	740	2,190	64,200
November	1,680	1,540	350	2,770	53,000	2,700	740	2,190	64,900
December	1,680	1,560	350	2,770	52,500	2,240	740	2,190	64,100
January–December	20,100	18,700	4,200	33,200	630,000	38,200	8,880	26,300	780,000
2024									
January	1,680	1,540	350	2,770	52,400	4,070	740	2,190	65,700
February	1,680	1,540	350	2,770	52,600	3,330	740	2,190	65,200
March	1,680	1,550	350	2,770	50,800	3,360	740	2,190	63,400
April	1,680	1,550	350	2,770	54,500	3,530	740	2,190	67,300
January–April	6,710	6,180	1,400	11,100	210,000	14,300	2,960	8,770	262,000

<sup>1</sup>Electrolytically refined and fire refined from scrap based on source of material at smelter or refinery level.

<sup>2</sup>Plants are surveyed by the U.S. Geological Survey on an annual basis; data after 2022 not yet available. Data are estimated based on the monthly average of 2022 annual data.

<sup>3</sup>Does not include an estimate, based on 2022 annual data, of 3,000 tons per month from new scrap and 2,560 tons per month from old scrap of copper recovered from scrap types other than copper-base.

**Table 6.** U.S. production, shipments, and stocks of brass and wire-rod semifabricates.

[Data are rounded to no more than three significant digits; may not add to totals shown. Data are in metric tons, gross weight]

Period	Production		Shipments		Stocks, end of period	
	Brass mills	Wire-rod mills	Brass mills	Wire-rod mills	Brass mills	Wire-rod mills
<b>2023</b>						
January–April	302,000	399,000	300,000	394,000	33,400	23,400
April	73,500	97,500	74,700	91,700	33,400	23,400
May	72,900	100,000	74,000	101,000	32,300	22,700
June	73,100	85,200	73,000	93,500	32,400	14,400
July	73,700	101,000	73,200	97,000	32,800	18,700
August	74,800	103,000	74,900	101,000	32,700	20,800
September	74,100	103,000	73,900	101,000	32,900	23,600
October	74,700	100,000	74,300	108,000	32,900	16,100
November	71,200	93,500	71,800	94,600	32,300	14,900
December	73,500	84,700	72,700	79,600	33,200	20,300
January–December	890,000	1,170,000	887,000	1,170,000	33,200	20,300
<b>2024</b>						
January	72,000	105,000	72,600	105,000	32,600	20,000
February	73,800	103,000	74,000	107,000	32,500	16,200
March	74,000	102,000	73,700	98,500	32,800	19,400
April	68,800	107,000	68,800	111,000	31,700	16,100
<b>January–April</b>	<b>289,000</b>	<b>417,000</b>	<b>289,000</b>	<b>421,000</b>	<b>31,700</b>	<b>16,100</b>



**Table 7.** U.S. consumption of refined copper.

[Data are rounded to no more than three significant digits; may not add to totals shown. Data are in metric tons. Estimated data are marked with a superscript “e”.]

Period	Brass mills	Wire-rod mills	Other plants <sup>e, 1</sup>	Total
<b>2023</b>				
January–April	141,000	379,000	13,900	534,000
April	35,800	92,400	3,470	132,000
May	35,900	96,600	3,470	136,000
June	35,200	86,400	3,470	125,000
July	35,500	94,400	3,470	133,000
August	35,200	99,800	3,470	138,000
September	35,000	96,000	3,470	134,000
October	36,500	90,300	3,470	130,000
November	31,800	86,900	3,470	122,000
December	33,300	84,300	3,470	121,000
January–December	419,000	1,110,000	41,600	1,570,000
<b>2024</b>				
January	32,800	103,000	3,470	140,000
February	32,900	97,400	3,470	134,000
March	28,100	95,200	3,470	127,000
April	24,700	101,000	3,470	130,000
<b>January–April</b>	<b>118,000</b>	<b>397,000</b>	<b>13,900</b>	<b>530,000</b>

<sup>1</sup>Chemical plants, foundries, ingot makers, and miscellaneous manufacturers. These plants are surveyed by the U.S. Geological Survey on an annual basis; data after 2022 not yet available. Data are estimated based on the monthly average of 2022 annual data.

**Table 8.** U.S. apparent consumption of copper.

[Data are rounded to no more than three significant digits; may not add to totals shown. Data are in metric tons. Revised data are marked with a superscript “r”.]

Period	Primary refined copper production	Copper in old scrap <sup>1</sup>	Refined imports for consumption <sup>2</sup>	Refined exports <sup>2</sup>	Refined stock change during period	Apparent consumption <sup>3</sup>
<b>2023</b>						
January–April	291,000	50,900	311,000	6,490	-8,970	656,000
April	66,400	12,400	97,900	2,020	8,080	167,000
May	65,500	12,100	86,700	1,910	587	162,000
June	69,000	12,000	92,800	1,770	29,200	143,000
July	72,200	12,400	60,300	4,700	-2,990	143,000
August	69,000	12,300	54,300	3,580	4,450	128,000
September	66,900	12,100	59,700	3,650	20,700	114,000
October	71,900	12,300	48,800	3,910	16,600	112,000
November	66,400	11,800	30,000	4,870	1,110	102,000
December	70,000	11,300	26,800	3,540	-16,800	121,000
January–December	842,000	147,000	771,000	34,400	43,900	1,680,000
<b>2024</b>						
January	77,700 <sup>r</sup>	13,100	90,100	4,540	-25,800	202,000 <sup>r</sup>
February	75,600 <sup>r</sup>	12,400	39,700	4,870	-7,080	130,000 <sup>r</sup>
March	76,200 <sup>r</sup>	12,400	50,100	4,780	-6,400 <sup>r</sup>	140,000 <sup>r</sup>
April	75,200	12,600	43,800	5,880	-22,700	148,000
<b>January–April</b>	<b>305,000</b>	<b>50,600</b>	<b>224,000</b>	<b>20,100</b>	<b>-62,000</b>	<b>621,000</b>

<sup>1</sup>Copper recovered from old scrap (of copper-base and non-copper-base) and converted to refined metal, alloys, and other forms. Includes reported monthly production and estimates for annual reporters based on the monthly average of 2022 annual data. Old scrap consists of copper items used by consumers.

<sup>2</sup>Source: U.S. Census Bureau. Includes Harmonized Tariff Schedule of the United States (imports) and Schedule B of the United States (exports) codes 7403.11.0000, 7403.12.0000, 7403.13.0000, and 7403.19.0000.

<sup>3</sup>Primary refined copper production plus copper in old scrap plus refined imports for consumption minus refined exports minus refined stock change during period.

**Table 9.** U.S. consumption of purchased copper-base scrap.

[Data are rounded to no more than three significant digits; may not add to totals shown. Data are in metric tons, gross weight. Estimated data are marked with a superscript “e”. New scrap refers to material generated during the manufacturing process. Old scrap consists of copper items used by consumers.]

with a superscript <sup>e</sup> : New scrap refers to material generated during the manufacturing process. Old scrap consists of copper items used by consumers.]

Period	Smelters and refineries		Ingot makers <sup>e,1</sup>		Brass and wire-rod mills <sup>2</sup>		Foundries, etc. <sup>e,1</sup>		Total
	New scrap <sup>e</sup>	Old scrap	New scrap	Old scrap	New scrap	Old scrap	New scrap	Old scrap	
2023									
January–April	6,920	6,370	3,720	13,000	246,000	15,200	3,500	10,300	305,000
April	1,730	1,590	930	3,260	60,600	3,430	875	2,580	75,000
May	1,730	1,630	930	3,260	59,900	3,090	875	2,580	74,000
June	1,730	1,600	930	3,260	57,900	3,060	875	2,580	72,000
July	1,730	1,640	930	3,260	60,600	3,360	875	2,580	75,000
August	1,730	1,590	930	3,260	61,500	3,400	875	2,580	75,900
September	1,730	1,670	930	3,260	59,800	3,060	875	2,580	73,900
October	1,730	1,620	930	3,260	59,800	3,340	875	2,580	74,100
November	1,730	1,590	930	3,260	61,000	2,810	875	2,580	74,800
December	1,730	1,610	930	3,260	60,600	2,370	875	2,580	73,900
January–December	20,700	19,300	11,200	39,100	727,000	39,700	10,500	31,000	898,000
2024									
January	1,730	1,590	930	3,260	60,500	4,260	875	2,580	75,700
February	1,730	1,590	930	3,260	60,600	3,440	875	2,580	75,000
March	1,730	1,600	930	3,260	58,800	3,500	875	2,580	73,300
April	1,730	1,600	930	3,260	60,700	3,680	875	2,580	75,300
January–April	6,920	6,370	3,720	13,000	241,000	14,900	3,500	10,300	299,000

<sup>1</sup>Plants are surveyeded by the U.S. Geological Survey on an annual basis; data after 2022 not yet available. Data are estimated based on the monthly average of 2022 annual data.

<sup>2</sup>Consumption at brass and wire-rod mills assumed equal to receipts.

**Table 10.** Copper stocks in the United States at end of period.

[Data are rounded to no more than three significant digits; may not add to totals shown. Data are in metric tons, copper content. Estimated data are marked with a superscript “e”.]

Period	Blister and anodes	Refined copper						Total refined
		Refineries	Wire-rod mills	Brass mills	Other <sup>e,1</sup>	COMEX <sup>2</sup>	LME <sup>3</sup>	
2023								
April	35,100	12,000	19,000	11,200	6,970	25,100	300	74,600
May	39,900	10,100	15,400	11,700	6,970	25,100	5,950	75,200
June	34,500	9,050	19,000	10,700	6,970	31,700	26,900	104,000
July	20,400	5,210	16,500	10,800	6,970	39,400	22,600	101,000
August	17,700	6,560	14,700	11,100	6,970	29,000	37,600	106,000
September	15,000	2,170	16,800	11,700	6,970	23,000	65,900	126,000
October	14,300	2,230	20,100	10,500	6,970	19,300	84,100	143,000
November	10,500	3,070	15,100	9,530	6,970	17,100	92,500	144,000
December	10,500	6,590	16,900	9,680	6,970	17,200	70,100	127,000
2024								
January	13,100	1,870	13,100	9,160	6,970	21,500	49,000	102,000
February	12,800	816	11,500	9,810	6,970	26,200	39,300	94,600
March	15,200	1,030	12,500	9,680	6,970	27,100	30,900	88,100
April	18,100	1,910	10,400	9,330	6,970	21,500	15,300	65,400

<sup>1</sup>Chemical plants, foundries, ingot makers, and miscellaneous manufacturers. These plants are surveyed by the U.S. Geological Survey on an annual basis; data after 2022 not yet available. Data are estimated based on yearend 2022 stocks.

<sup>2</sup>Commodity Exchange Inc.

<sup>3</sup>London Metal Exchange Ltd., U.S. warehouses.

**Table 11.** Average prices for refined copper in the United States and on the London Metal Exchange.  
[Data are in cents per pound. Source: S&P Global Platts Metals Week.]

<b>Period</b>	<b>COMEX first position<sup>1</sup></b>	<b>U.S. producers cathode<sup>2</sup></b>	<b>LME grade A cash<sup>3</sup></b>
<b>2023</b>			
April	400.037	410.037	399.767
May	374.173	384.173	373.469
June	379.598	389.598	380.362
July	383.570	393.570	383.041
August	376.330	386.330	378.804
September	372.360	382.360	375.129
October	359.964	368.664	360.118
November	371.836	379.211	370.743
December	385.153	392.653	380.729
January–December	385.749	395.297	384.772
<b>2024</b>			
January	381.207	389.107	378.455
February	379.663	388.038	376.937
March	397.643	406.143	393.496
April	436.091	444.991	430.075
<b>January–April</b>	<b>398.651</b>	<b>407.070</b>	<b>394.741</b>

<sup>1</sup>Listed as “COMEX high grade first position.” COMEX refers to the Commodity Exchange Inc.

<sup>2</sup>Sum of “COMEX high grade first position” and “NY dealer premium cathode.” Reflects the delivered spot price of copper cathode to U.S. consumers by U.S. producers.

<sup>3</sup>LME refers to the London Metal Exchange Ltd.

**Table 12.** Average buying prices for copper scrap in the United States.  
[Data are in cents per pound. Source: Fastmarkets-AMM.]

Period	Brass mills no. 1 scrap	Refiners no. 2 scrap	Dealers	
			No. 2 scrap	Red brass turnings and borings
2023				
April	389.50	365.84	316.50	158.00
May	365.86	341.68	302.50	154.00
June	371.69	347.00	286.50	154.00
July	376.35	351.85	290.00	168.00
August	369.28	343.74	294.00	187.50
September	367.05	341.55	295.00	190.00
October	352.14	325.64	285.00	182.50
November	363.50	337.00	280.00	183.00
December	377.50	351.00	292.50	188.00
January–December	376.99	352.36	297.63	169.96
2024				
January	373.21	346.79	294.00	185.50
February	371.20	346.55	297.50	181.50
March	390.05	368.18	300.50	189.00
April	427.39	405.77	315.00	194.00
January–April	390.46	366.82	301.75	187.50

**Table 13.** U.S. imports for consumption of unmanufactured copper.

[Data are rounded to no more than three significant digits; may not add to totals shown. Data are in metric tons, copper content. Source: U.S. Census Bureau.]

Country or locality	Ore and concentrates <sup>1</sup>			Matte, ash, and precipitates <sup>2</sup>			Blister and anodes <sup>3</sup>			Refined <sup>4</sup>		
	2024			2024			2024			2024		
	2023	April	January–April	2023	April	January–April	2023	April	January–April	2023	April	January–April
Belgium	0	0	0	175	0	0	0	0	0	( <sup>5</sup> )	0	0
Canada	3,270	0	8	675	52	192	5	0	0	128,000	9,380	43,000
Chile	0	0	0	0	0	0	0	0	0	531,000	25,700	153,000
China	0	0	0	0	0	0	9	0	( <sup>5</sup> )	462	65	70
Congo (Kinshasa)	0	0	0	0	0	0	0	0	( <sup>5</sup> )	11,800	785	1,040
Finland	0	0	0	0	0	0	78	0	0	41	12	24
France	0	0	0	0	0	0	0	0	0	56	( <sup>5</sup> )	( <sup>5</sup> )
Germany	0	0	0	0	0	16	( <sup>5</sup> )	( <sup>5</sup> )	( <sup>5</sup> )	2,240	151	230
Hungary	34	0	0	0	0	0	0	0	0	0	0	0
Italy	0	0	0	2	0	0	0	0	0	( <sup>5</sup> )	2	2
Japan	1	0	( <sup>5</sup> )	0	0	0	( <sup>5</sup> )	0	0	1,880	156	521
Korea, Republic of	0	0	0	0	0	0	1	0	1	57	5	5
Malaysia	0	0	0	0	0	0	28	0	0	0	0	0
Mexico	2	0	0	24	( <sup>5</sup> )	6	0	0	0	14,000	80	1,400
Peru	0	0	0	0	0	0	0	0	0	79,500	7,480	24,200
Spain	0	0	0	203	0	0	0	0	( <sup>5</sup> )	( <sup>5</sup> )	0	0
United Kingdom	0	0	0	( <sup>5</sup> )	0	0	4	( <sup>5</sup> )	2	0	0	4
Zambia	0	0	0	0	0	0	0	0	0	2,040	0	0
Other	( <sup>5</sup> )	0	0	( <sup>5</sup> )	( <sup>5</sup> )	( <sup>5</sup> )	( <sup>5</sup> )	0	1	26	9	35
<b>Total</b>	<b>3,300</b>	<b>0</b>	<b>8</b>	<b>1,080</b>	<b>52</b>	<b>214</b>	<b>125</b>	<b>(<sup>5</sup>)</b>	<b>3</b>	<b>771,000</b>	<b>43,800</b>	<b>224,000</b>

<sup>1</sup>Harmonized Tariff Schedule of the United States (HTS) code 2603.00.0010. Includes copper ore and concentrates only; excludes copper contained in ore and concentrates of other metals.<sup>2</sup>HTS codes 2620.30.0010 and 7401.00.0000. Includes copper matte, ash, and precipitates only; excludes the copper content of mattes and ashes of other metals.<sup>3</sup>HTS code 7402.00.0000.<sup>4</sup>HTS codes 7403.11.0000, 7403.12.0000, 7403.13.0000, and 7403.19.0000.<sup>5</sup>Less than ½ unit.

**Table 14.** U.S. exports of unmanufactured copper.

[Data are rounded to no more than three significant digits; may not add to totals shown. Data are in metric tons, copper content. Source: U.S. Census Bureau.]

Country or locality	Ore and concentrates <sup>1</sup>			Matte, ash, and precipitates <sup>2</sup>			Blister and anodes <sup>3</sup>			Refined <sup>4</sup>		
	2023	2024		2023	2024		2023	2024		2023	2024	
		April	January–April		April	January–April		April	January–April		April	January–April
Belgium	126	18	114	5,120	390	1,340	647	11	36	140	0	0
Canada	42,400	2,610	11,500	3,120	779	2,810	25,100	3,910	16,000	9,120	1,160	6,880
China	53,900	4,190	13,800	422	0	0	935	0	42	660	( <sup>5</sup> )	220
Dominican Republic	193	0	9	86	0	111	0	0	0	18	3	14
Finland	3,450	0	0	0	0	0	0	0	0	0	0	0
Germany	0	0	0	293	13	105	245	0	40	3,580	2	29
India	9	0	2	38	0	0	274	0	86	37	0	0
Italy	0	0	0	2	0	0	129	2	64	3	3	3
Japan	4,260	0	0	87	0	34	53	20	20	4	0	5
Korea, Republic of	11	0	9	105	118	292	1,240	58	427	90	0	67
Malaysia	124	56	149	2,780	0	43	630	4	57	1,870	383	1,500
Mexico	230,000	18,400	74,800	1,560	4	4	130	2	13	15,700	3,300	10,200
Netherlands	0	0	0	48	0	20	0	0	0	2,010	997	997
Pakistan	0	0	0	0	0	0	1	0	0	598	0	0
Philippines	0	8	22	1,020	0	0	47	0	5	0	0	0
Poland	0	0	0	999	77	251	0	0	0	0	0	0
Singapore	5	0	0	181	0	2	2	0	0	80	2	5
Slovakia	0	0	0	392	11	99	0	0	0	0	0	0
Spain	0	2,490	2,490	2,580	248	873	178	20	20	218	19	19
Switzerland	1,200	0	0	0	0	0	18	0	7	5	0	2
Taiwan	6,000	0	950	18	0	0	45	0	20	14	0	0
Thailand	0	0	7	13	0	0	144	20	20	1	0	0
Turkey	0	0	0	159	0	99	40	0	0	0	0	20
United Arab Emirates	0	0	0	0	0	0	53	0	0	156	0	0
Other	132	1	18	207	224	870	338	58	194	85	19	112
<b>Total</b>	<b>341,000</b>	<b>27,800</b>	<b>104,000</b>	<b>19,200</b>	<b>1,860</b>	<b>6,950</b>	<b>30,300</b>	<b>4,100</b>	<b>17,100</b>	<b>34,400</b>	<b>5,880</b>	<b>20,100</b>

<sup>1</sup>Schedule B of the United States code 2603.00.0010. Includes copper ore and concentrates only; excludes copper contained in ore and concentrates of other metals.<sup>2</sup>Schedule B codes 2620.30.0000, 7401.00.0010, and 7401.00.0050. Includes copper matte, ash, and precipitates only; excludes the copper content of mattes and ashes of other metals.<sup>3</sup>Schedule B code 7402.00.0000.<sup>4</sup>Schedule B codes 7403.11.0000, 7403.12.0000, 7403.13.0000, and 7403.19.0000.<sup>5</sup>Less than ½ unit.



**Table 15.** U.S. imports for consumption of copper scrap.

[Data are rounded to no more than three significant digits; may not add to totals shown. Data are in metric tons, gross weight.]

Source: U.S. Census Bureau.]

Country or locality	Unalloyed <sup>1</sup>			Alloyed <sup>2</sup>		
	2023	2024		2023	2024	
		April	January–April		April	January–April
Antigua and Barbuda	0	0	0	139	25	70
Bahamas, The	0	0	0	606	32	175
Barbados	0	0	0	168	25	93
Bermuda	27	0	5	107	10	33
Bolivia	0	0	0	99	21	42
Brazil	113	0	0	230	0	2
Canada	15,100	1,450	5,260	32,200	3,480	12,200
Cayman Islands	0	4	4	214	5	65
Colombia	150	44	150	131	14	31
Costa Rica	829	82	256	1,020	120	511
Curacao	0	0	0	134	10	92
Dominican Republic	1,020	82	274	1,330	60	291
Ecuador	0	0	0	120	24	86
El Salvador	0	0	0	861	36	250
Germany	502	69	190	85	11	12
Grenada	0	0	0	155	22	87
Guatemala	0	0	0	280	16	56
Guyana	0	0	0	80	19	52
Haiti	0	0	0	192	108	160
Honduras	49	4	34	1,140	62	385
Jamaica	5	0	0	396	33	100
Mexico	13,200	1,300	4,860	45,100	4,280	14,900
Panama	961	150	616	627	126	436
Peru	0	0	0	96	0	0
Poland	73	0	0	0	0	0
Sint Maarten	0	0	0	256	35	118
Saint Lucia	0	0	0	181	9	46
Saint Vincent and the Grenadines	0	0	0	133	4	27
Suriname	264	49	116	83	0	3
Venezuela	0	0	0	145	65	65
Other	71	38	84	308	97	323
<b>Total</b>	<b>32,300</b>	<b>3,270</b>	<b>11,800</b>	<b>86,500</b>	<b>8,750</b>	<b>30,700</b>

<sup>1</sup>Harmonized Tariff Schedule of the United States (HTS) codes 7404.00.3020 and 7404.00.6020.<sup>2</sup>HTS codes 7404.00.3045, 7404.00.3055, 7404.00.3065, 7404.00.3090, 7404.00.6045, 7404.00.6055, 7404.00.6065, and 7404.00.6090.

**Table 16.** U.S. exports of copper scrap.

[Data are rounded to no more than three significant digits; may not add to totals shown. Data are in metric tons, gross weight. Source: U.S. Census Bureau.]

Country or locality	Unalloyed <sup>1</sup>							Alloyed <sup>2</sup>				
	2023	2024						2024				
		No. 1		No. 2		Other		2023	Segregated		Unsegregated	
		April	January–April	April	January–April	April	January–April		April	January–April	April	January–April
Austria	930	0	0	59	116	0	0	1,850	0	0	93	186
Belgium	26,600	960	4,200	926	3,610	338	1,910	7,440	38	229	1,280	2,320
Cambodia	0	0	0	0	0	0	0	637	0	0	272	272
Canada	69,600	0	0	0	0	6,670	23,900	26,000	0	0	1,560	7,060
China	289,000	8,130	36,200	4,630	21,000	19,300	70,900	37,800	1,760	6,890	1,710	6,200
Germany	19,000	1,150	3,580	37	498	481	1,310	11,800	0	77	804	2,950
Greece	5,620	218	573	0	21	0	80	1,570	0	20	0	20
Hong Kong	18,100	105	401	1,830	5,080	334	1,990	3,790	0	202	111	1,010
India	19,400	880	3,430	251	543	855	2,460	53,900	2,280	6,870	3,490	11,500
Japan	18,500	297	2,020	387	1,830	647	2,420	6,420	131	318	305	1,390
Korea, Republic of	26,100	410	2,580	424	1,890	736	2,380	13,500	168	638	537	1,410
Malaysia	30,900	983	4,060	1,130	4,200	1,310	4,440	41,300	682	1,980	3,400	11,600
Mexico	2,660	351	954	1	1	14	52	1,860	12	107	5	97
Netherlands	2,210	38	163	44	102	0	0	1,030	0	77	41	403
Pakistan	524	( <sup>3</sup> )	135	0	218	0	0	16,900	620	1,260	1,940	5,260
Philippines	1,020	0	0	0	0	0	0	780	9	34	196	295
Poland	14,000	139	640	0	0	196	1,230	466	0	0	39	78
Singapore	1,750	0	0	0	0	0	47	402	0	0	80	118
Slovakia	781	47	171	0	255	0	0	1,570	174	811	90	534
Spain	1,670	21	134	40	118	101	228	4,600	99	379	257	1,120
Taiwan	9,410	283	1,410	0	113	358	2,040	4,270	0	37	211	1,090
Thailand	31,600	925	3,450	298	982	2,930	9,590	35,600	278	1,280	3,560	12,900
Turkey	572	405	427	0	0	0	0	1,140	0	17	80	220
United Arab Emirates	314	0	0	0	0	0	0	7,620	0	20	81	192
Vietnam	2,410	64	277	0	20	94	287	329	0	0	0	0
Other	1,850	98	178	0	326	0	267	1,530	21	61	164	591
<b>Total</b>	<b>595,000</b>	<b>15,500</b>	<b>65,000</b>	<b>10,100</b>	<b>41,000</b>	<b>34,400</b>	<b>126,000</b>	<b>284,000</b>	<b>6,270</b>	<b>21,300</b>	<b>20,300</b>	<b>68,800</b>

<sup>1</sup>Schedule B of the United States codes 7404.00.0010 and 7404.00.0015 (no. 1), 7404.00.0025 (no. 2), and 7404.00.0030 (other).<sup>2</sup>Schedule B codes for segregated copper-alloy scrap are 7404.00.0041, 7404.00.0046, 7404.00.0051, 7404.00.0056, 7404.00.0061, 7404.00.0066, and 7404.00.0075. Schedule B codes for unsegregated copper-alloy scrap are 7404.00.0085 and 7404.00.0095.<sup>3</sup>Less than ½ unit.